
Outline of ISO/IEC 19763-2

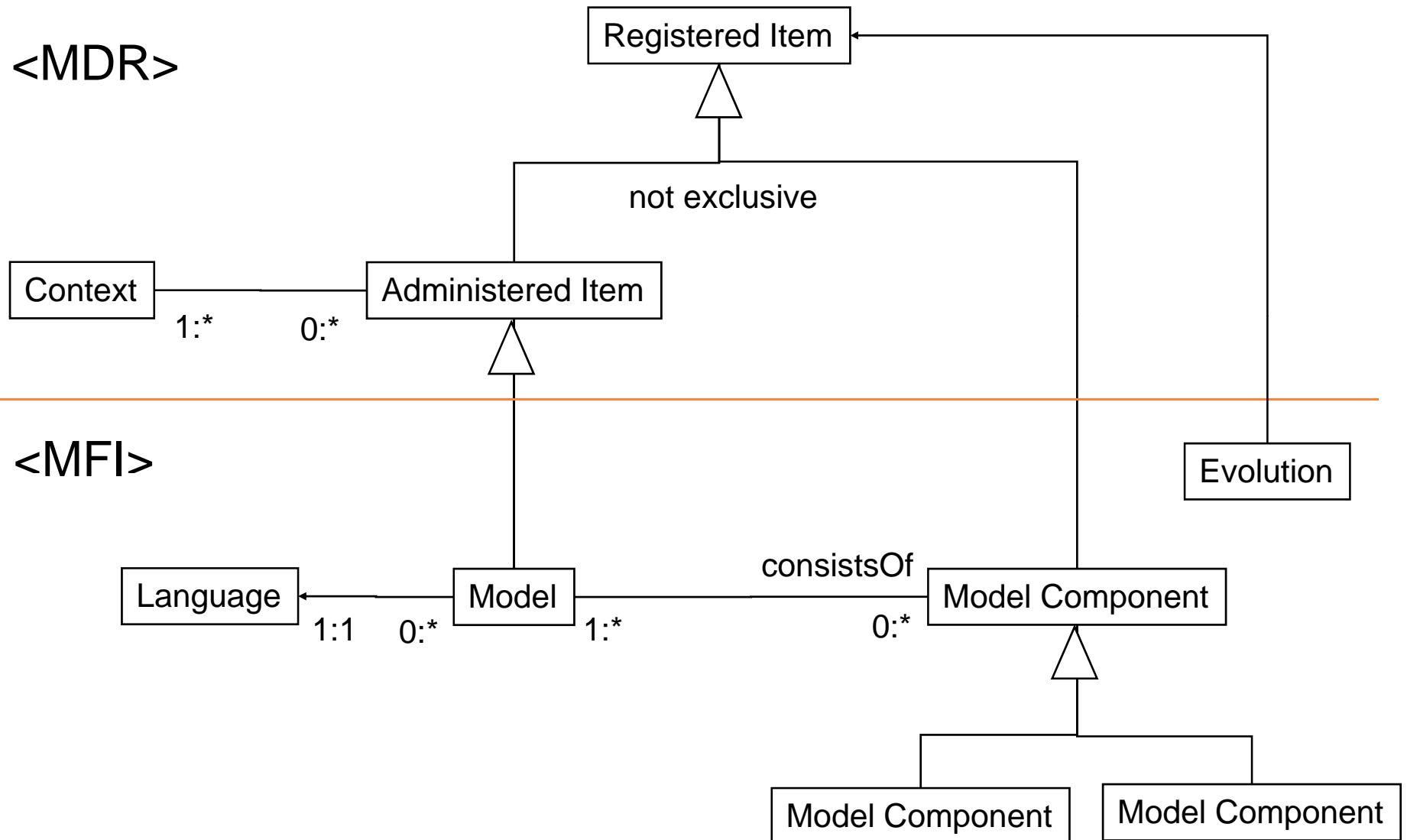
Metamodel framework for interoperability (MFI)

Core model and basic mapping

SC32/WG2

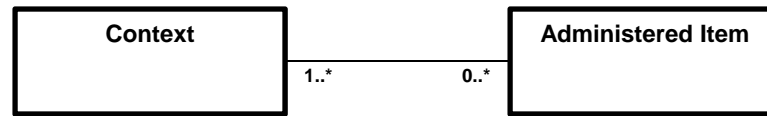
2010/05/27

High-level metamodel of Part2 Core (Candidate)

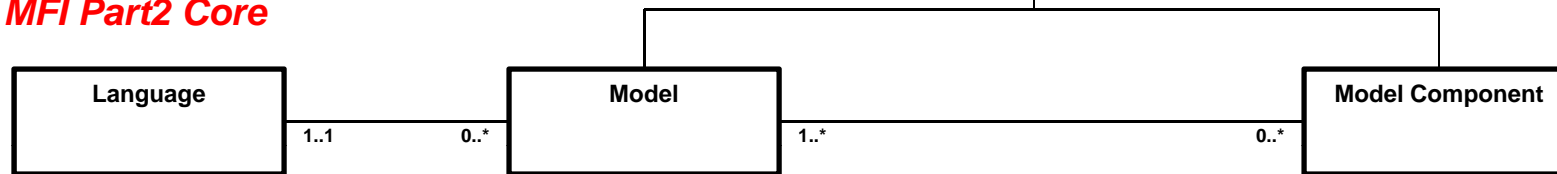


Relation of MFI Part2 Core model and other parts

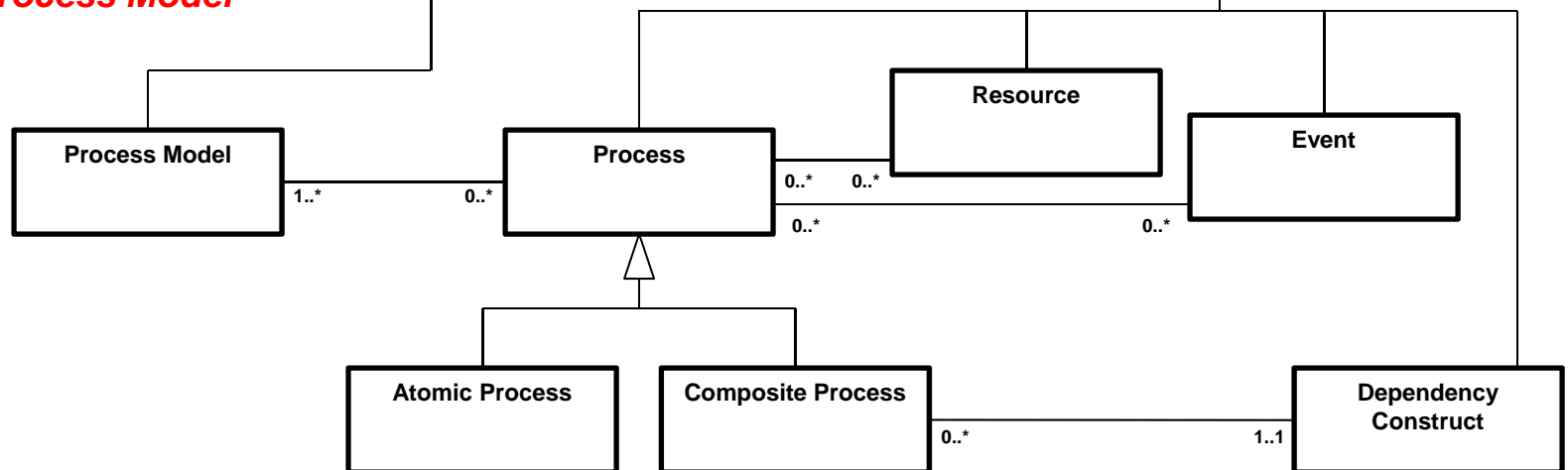
MDR



MFI Part2 Core

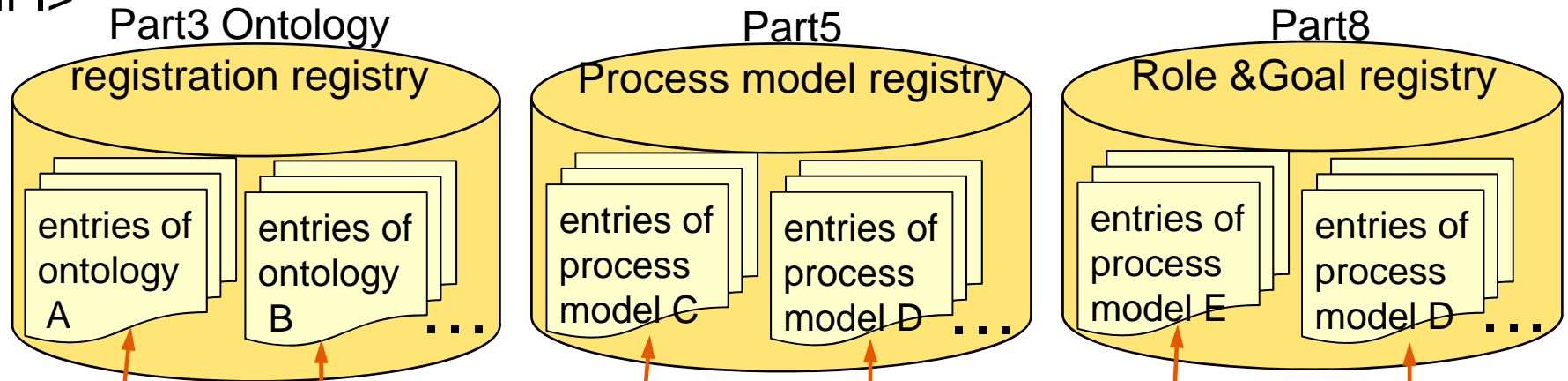


MFI Part5 Process Model



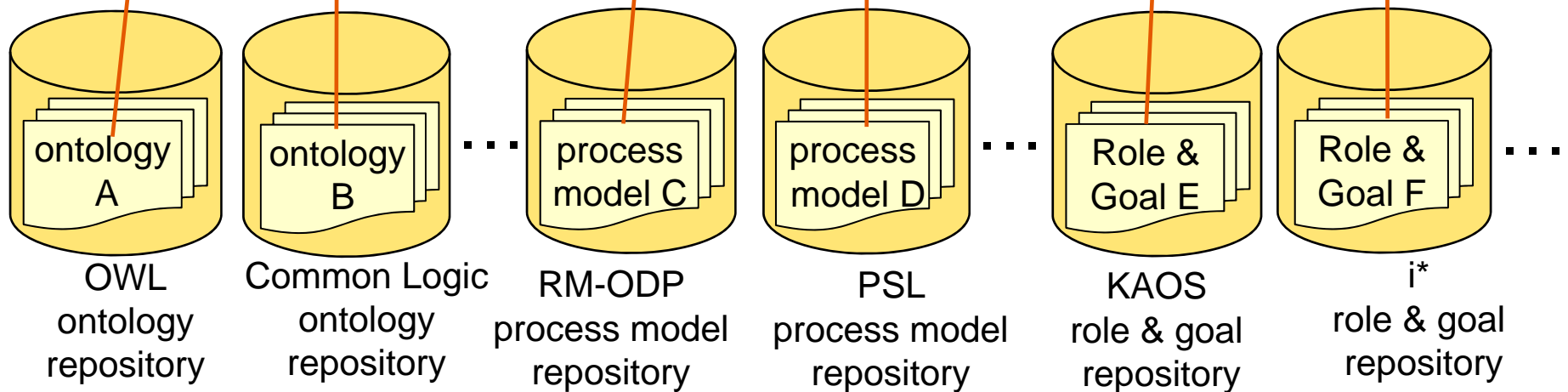
Basic Common Structure of MFI

<MFI>



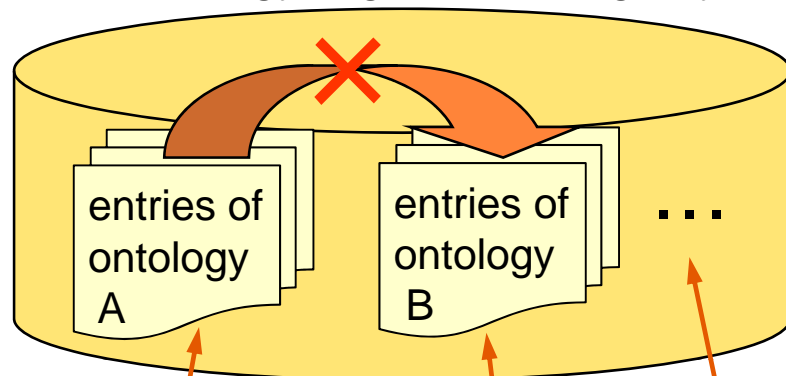
Only common semantics (essential subsets) are registered in MFI registry with some additional information.

<Outside MFI>



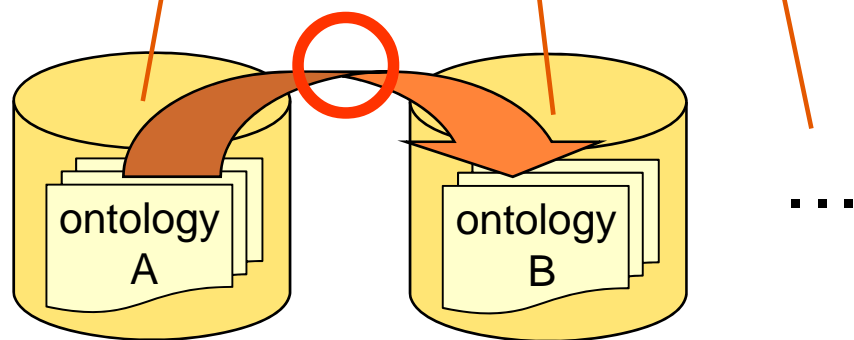
Basic Common Structure of MFI (MFI Part3 Case)

MFI Ontology registration registry



MFI Ontology registration registry does not have enough information to define a mapping from A to B because it has only common semantics of A and B.

Only common semantics (essential subsets) are registered in MFI Ontology registration registry with some additional information.



Mapping from A to B may be defined, using all the information (semantics) of A in OWL ontology repository and B in Common Logic ontology repository.

Mapping within the scope of MFI Part2

■ Mapping in M1



- This includes the following.



■ Note:

- MFI Part2 shall provide a facility to register a mapping as far as it can be defined.
- It is out of the scope, for example, to map the methods of class A to E/R model, since E/R model do not has a method.

MFI Part2 Core model and Basic Mapping (tentative)

