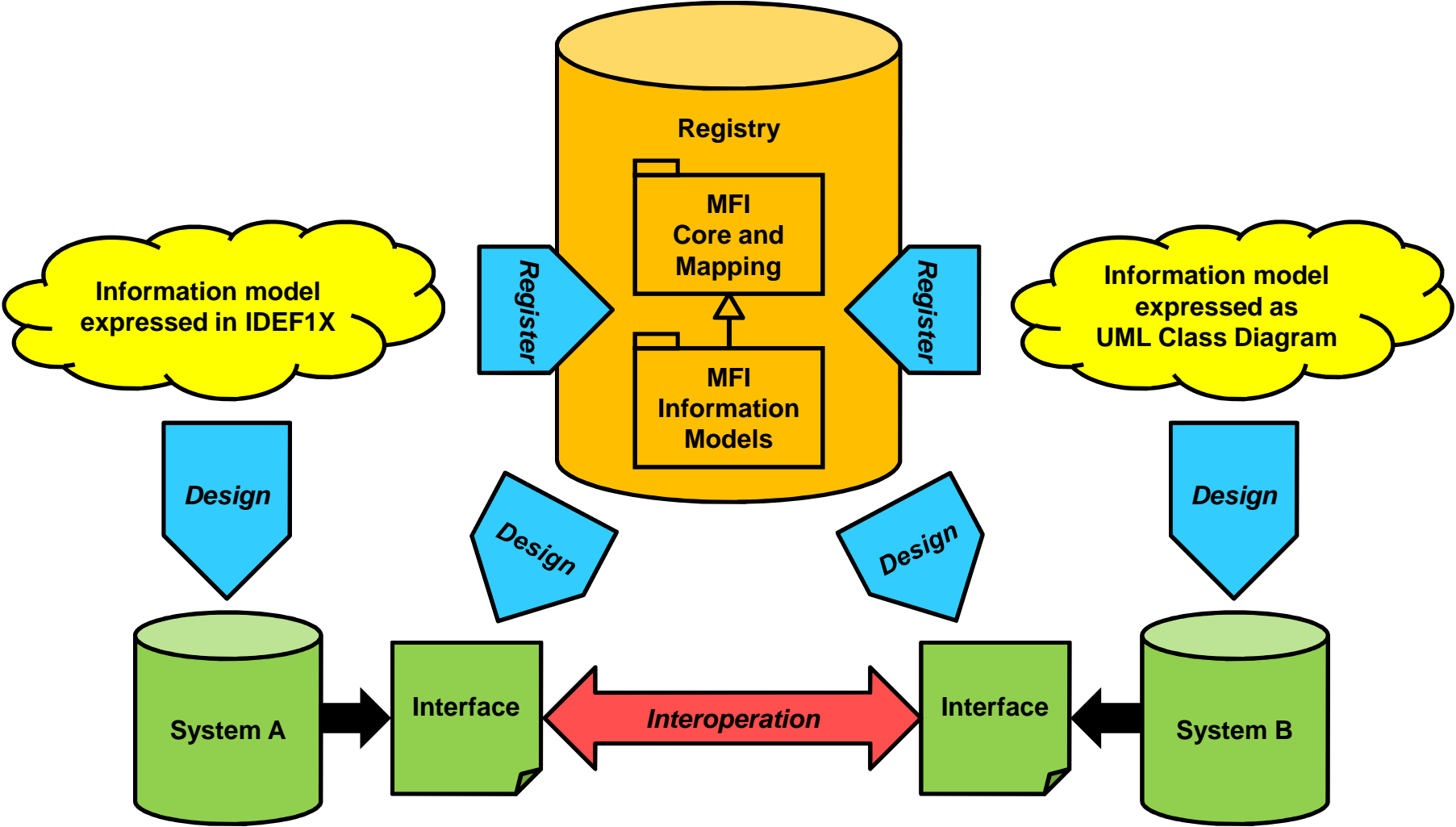


ISO/IEC JTC1/SC32/WG2 N1529

**MFI**  
**Metamodel for**  
**Information Models**

Keith Gordon

# Purpose



# Scope

## ***Within scope:***

Ellis-Barker notation

IDEF1X notation

Information Engineering notation

Chen notation

Express-G notation

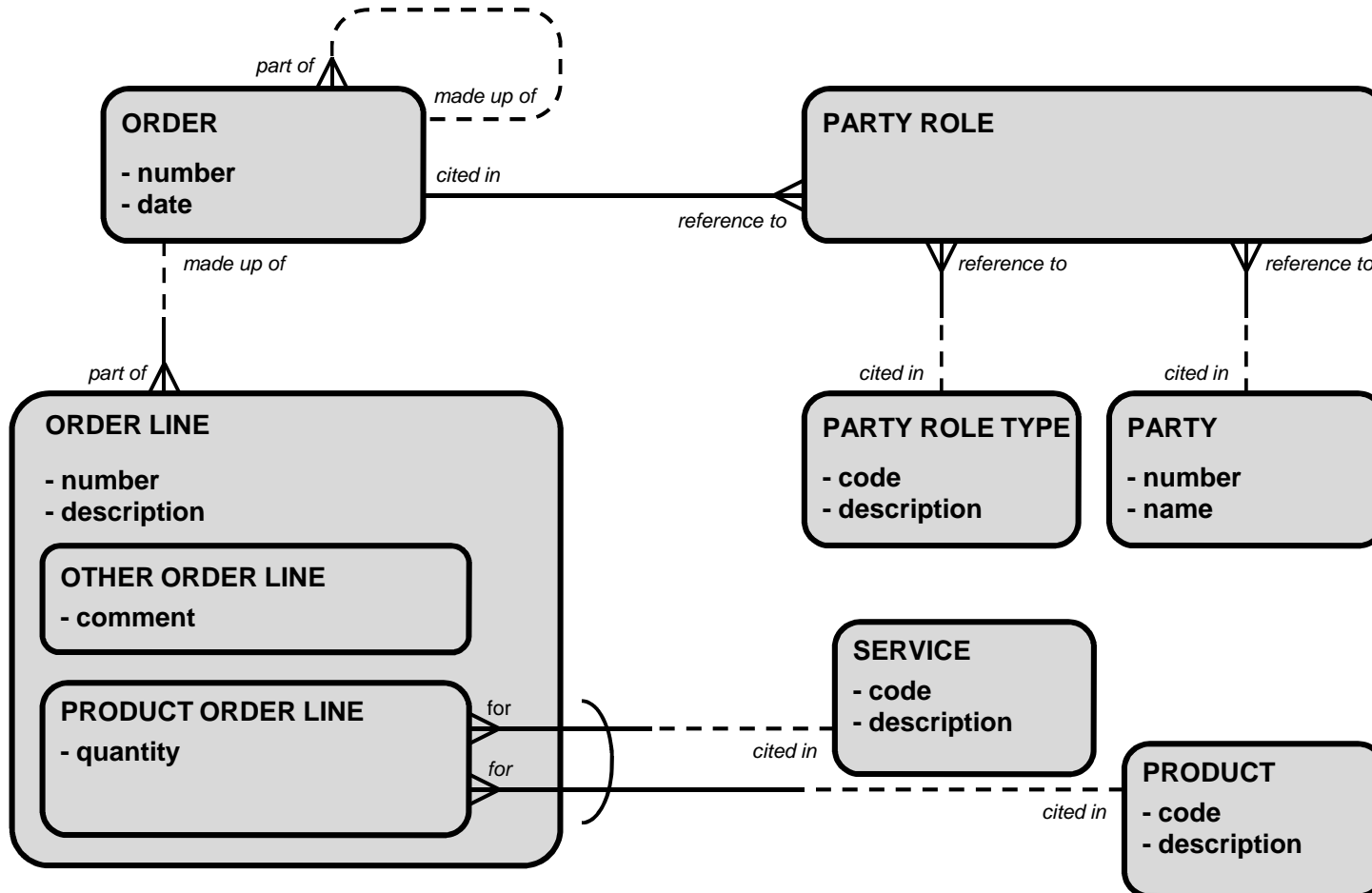
UML Class Diagram notation

## ***Out of scope:***

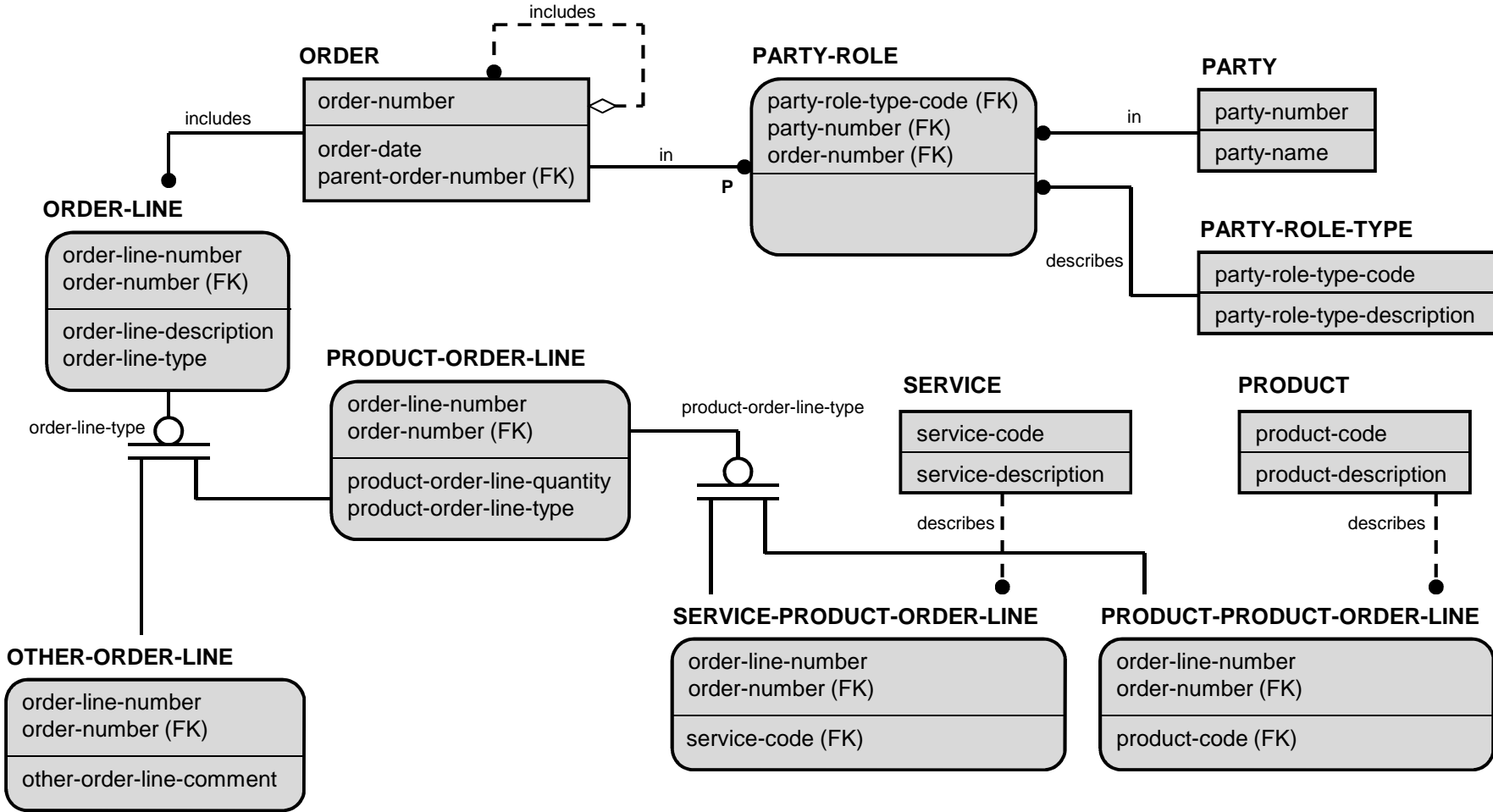
Database schemas

Object Role Modelling

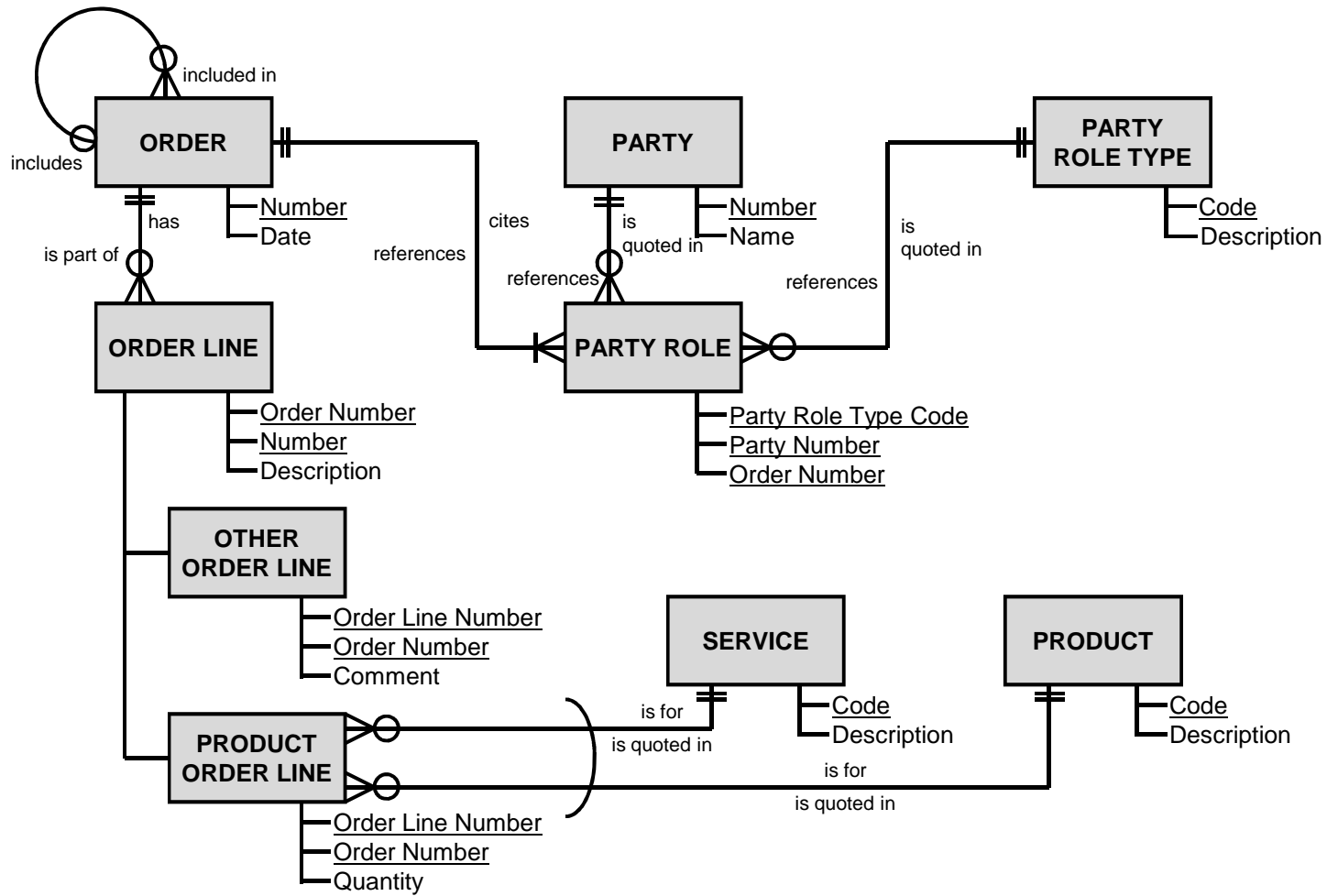
# Ellis-Barker notation



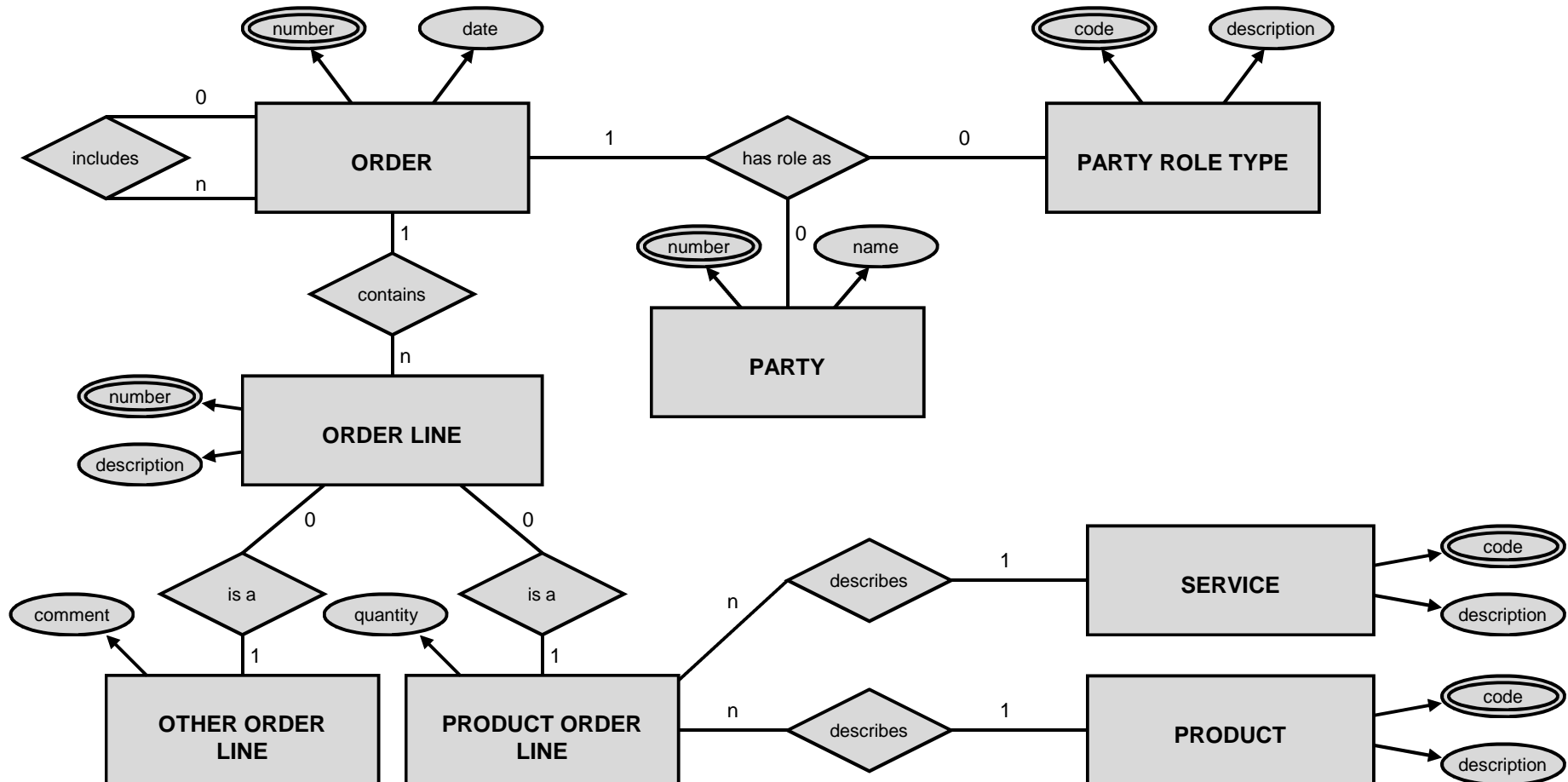
# IDEF1X notation



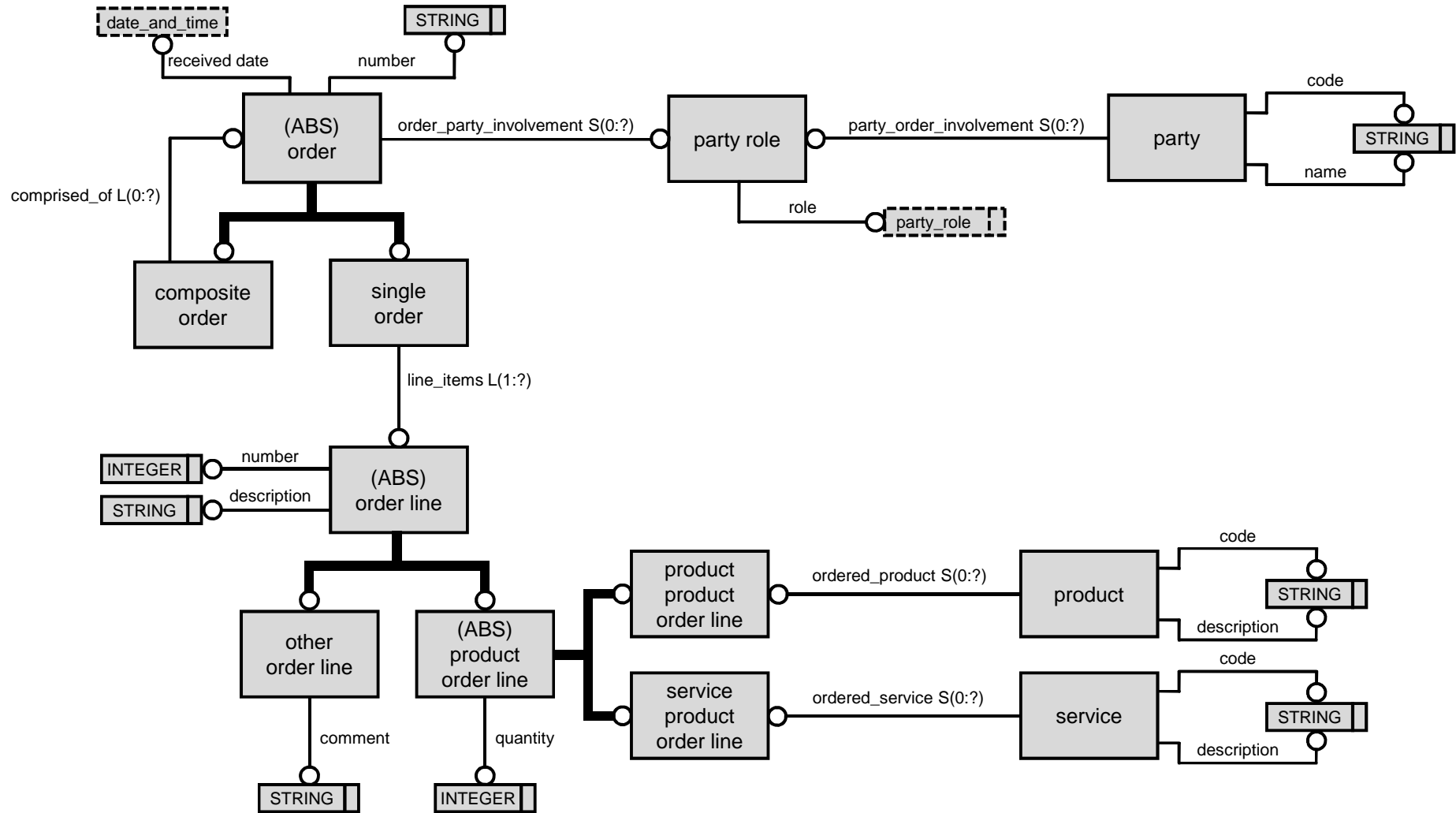
# Information Engineering notation



# Chen notation

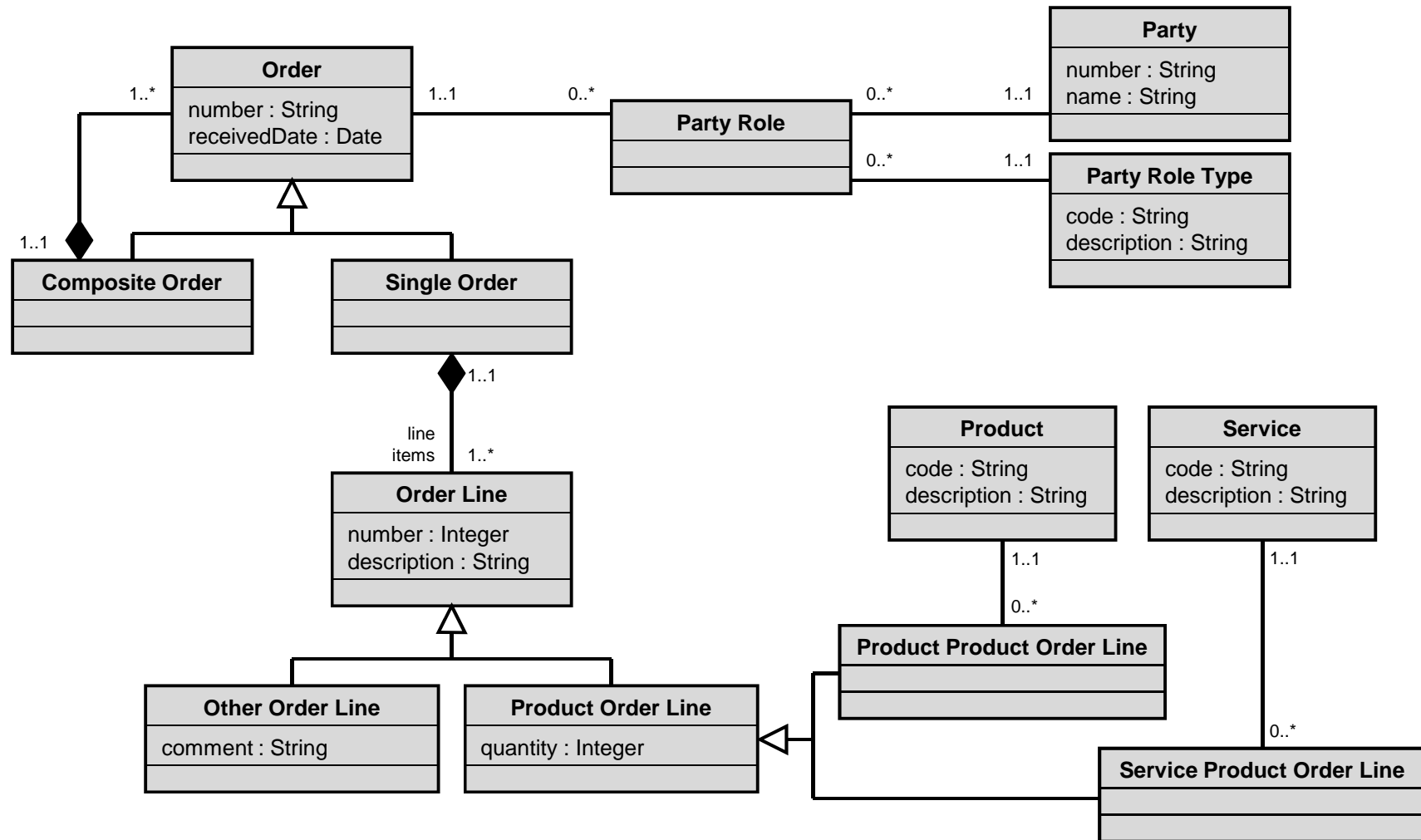


# Express-G notation

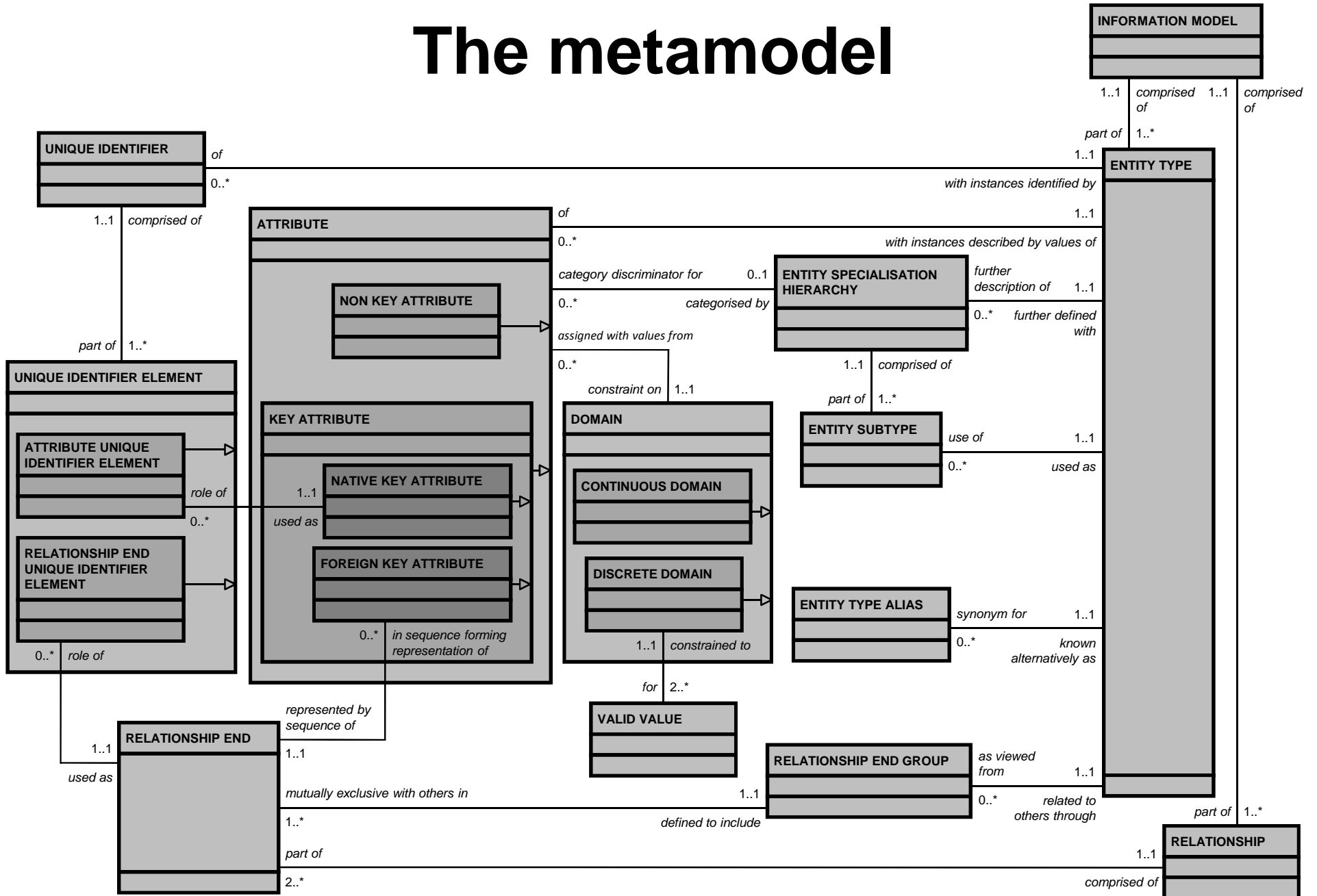




# UML Class Diagram notation

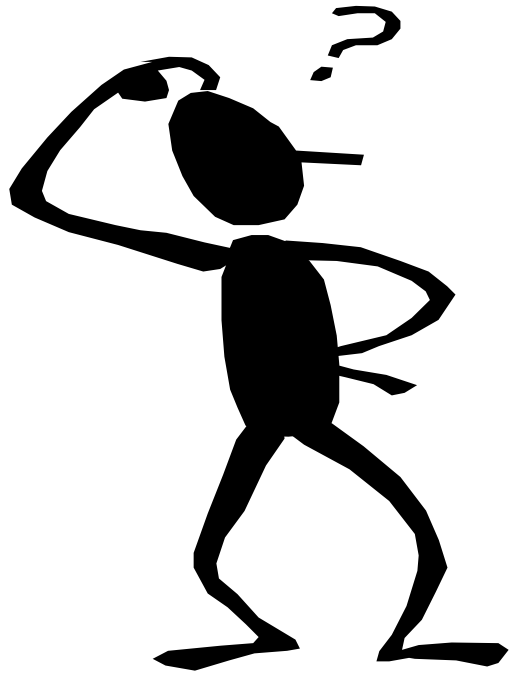


# The metamodel



# Outstanding issues

- 1) Is it necessary to distinguish between key and non-key attributes?
- 2) Can the domain concept be used for data types?
- 3) Is it necessary to recognise that there are sub-domains?
- 4) Is it OK to handle UML association classes as 'intersection' entity types?
- 5) Do we need to be able to recognise sub-types of UML associations?
- 6) How do we handle the objects and roles of ORM within this metamodel?
- 7) Which notation should be used for the metamodel? (What are the WG2 standards)?
- 8) What are the metaclasses in MFI Core and Mapping?



**Any questions?**

